

Welcome to



**TASSOMAI**

The Learning Program

[www.tassomai.com](http://www.tassomai.com)

# What is Tassomai?

Tassomai is a way to avoid stressful cramming near exams by spreading your learning and revision in

**GCSE English, Maths and Science**

throughout the year.



Students who used Tassomai regularly achieved **outstanding results** in their GCSE science exams.

# How does Tassomai work?

Tassomai **filters** the **syllabus** into 'micro-quizzes'

Tassomai will **decide** what you need to do **each day** to learn the syllabus **in time** for your exams



Your course is **tailored to the board specifications**, so you can have **peace of mind** that everything you're learning is relevant for school and for your exams.

I KNOW THIS



The **algorithm adapts** to each student, **identifying gaps in your knowledge** and helping you learn



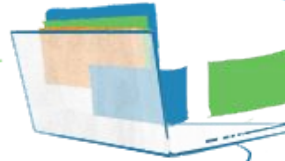
I DON'T KNOW THIS



KEEP

PRACTISING

I KNOW THIS



Each student will have a **completely unique journey** through the program

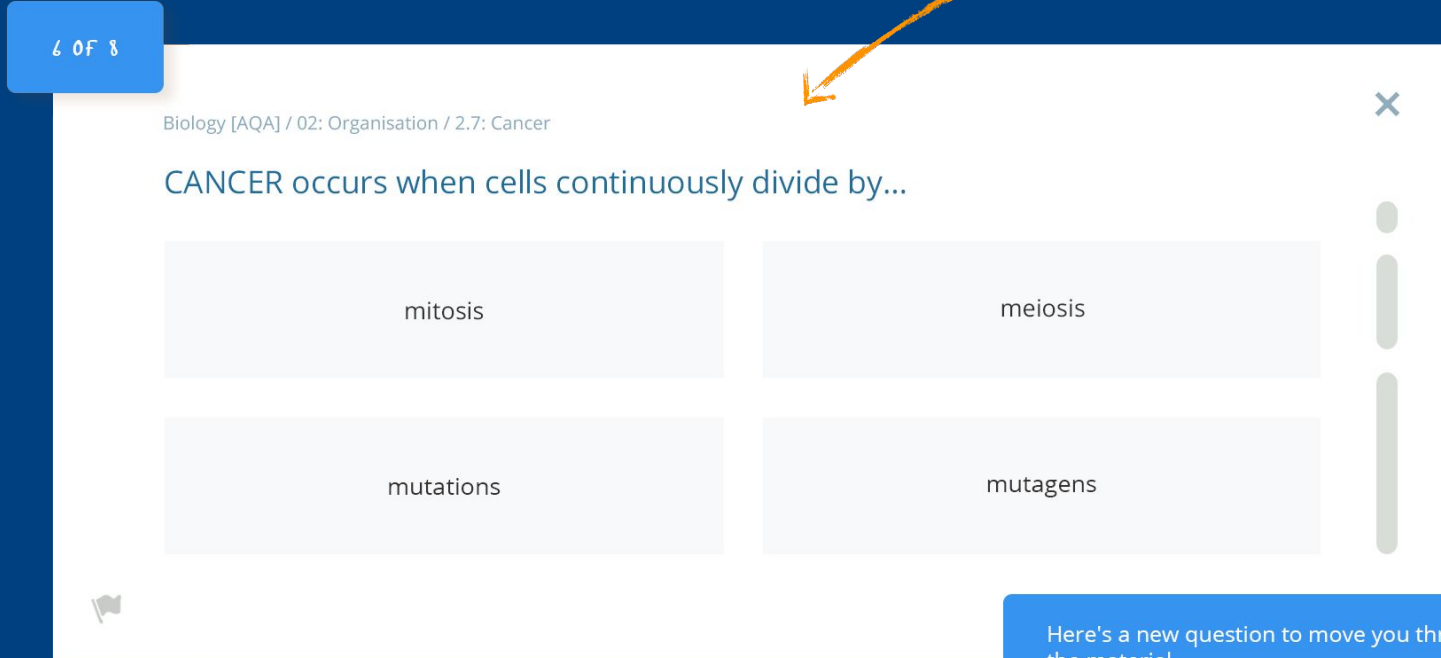


**Simply log  
on and do  
some  
quizzes for  
10-15 mins  
each day!**

# The Quizzes

# The Quizzes

This is what the quiz questions look like



6 OF 8

Biology [AQA] / 02: Organisation / 2.7: Cancer

CANCER occurs when cells continuously divide by...

mitosis	meiosis
mutations	mutagens

Here's a new question to move you through the material

The screenshot shows a quiz interface. At the top left, a blue box contains the text '6 OF 8'. Below this, the quiz title 'Biology [AQA] / 02: Organisation / 2.7: Cancer' is displayed. The main question is 'CANCER occurs when cells continuously divide by...'. Below the question, there are four answer options in a 2x2 grid: 'mitosis', 'meiosis', 'mutations', and 'mutagens'. To the right of the options is a vertical scrollbar. In the bottom right corner, a blue box contains the text 'Here's a new question to move you through the material'. An orange arrow points from the text 'This is what the quiz questions look like' to the question text.

# The Quizzes

When you answer a question correctly, the box will turn green and then you'll move on to the next question.

6 OF 8

Biology [AQA] / 02: Organisation / 2.7: Cancer

CANCER occurs when cells continuously divide by...

mitosis

meiosis

mutations

mutagens



Here's a new question to move you through the material

# The Quizzes

...and you will see  
the correct answer  
turn green.

6 OF 8

Biology [AQA] / 02: Organisation / 2.7: Cancer

CANCER occurs when cells continuously divide by...

mitosis

meiosis

mutations

mutagens



When you answer a  
question wrong, the  
question box will go red...

Here's a new question to move you through  
the material



# The Quizzes

The quizzes get longer the better you do, so you don't have to do that topic so often...

6 OF 8

Biology [AQA] / 02: Organisation / 2.7: Cancer

CANCER occurs when cells continuously divide by...

mitosis

meiosis

mutations

mutagens

Here's a new question to move you through the material

Why are the quiz  
cards different  
colours?



This one is BLUE which means it's a new question to move you through the material!

6 OF 8

Biology [AQA] / 02: Organisation / 2.7: Cancer

CANCER occurs when cells continuously divide by...

mitosis

meiosis

mutations

mutagens

Here's a new question to move you through the material

As you start to answer questions, you'll notice that the question cards start to change colour...

1 OF 8

Biology [AQA] / 02: Organisation / 2.3: Blood

What component of blood destroys PATHOGENS?

White blood cells

Red blood cells

Plasma

Platelets

Get this one right and it's three in a row...DONE!

(LAST ANSWERED 1 MONTH AGO)

A GREEN question is one that you have previously answered correctly.

If a question is ORANGE it means you have had mixed success with answering it in the past.

2 OF 8

Biology [AQA] / 02: Organisation / 2.2: The Heart & Blood Vessels

The heart is mostly made up of...

muscle tissue

fatty tissue

nervous tissue

bony tissue

You answered this one incorrectly last time ... can you remember the right answer?

(LAST ANSWERED 20 MINUTES AGO)

3 OF 8

Biology [AQA] / 02: Organisation / 2.2: The Heart & Blood Vessels

Blood flows from the heart to the organs through ---(1)--- and returns through ---(2)---.

1: arteries; 2: veins

1: arteries; 2: capillaries

1: veins; 2: arteries

1: veins; 2: capillaries



Just checking you remember this old one  
(LAST ANSWERED 4 DAYS AGO)

4 OF 8

Biology [AQA] / 02: Organisation / 3.2: Plant Organ System

In PLANTS, TRANSPIRATION is associated with the XYLEM, whilst TRANSLOCATION is associated with the...

phloem

leaves

waxy cuticles

stomata



You've not had this right yet... Take your time and choose carefully!

(LAST ANSWERED 1 HOUR AGO)

RED questions are the ones that you have not yet answered correctly.

PURPLE questions are ones you haven't seen for a while. You have answered them correctly in the past so we're just making sure you still know it!

# The Student Dashboard

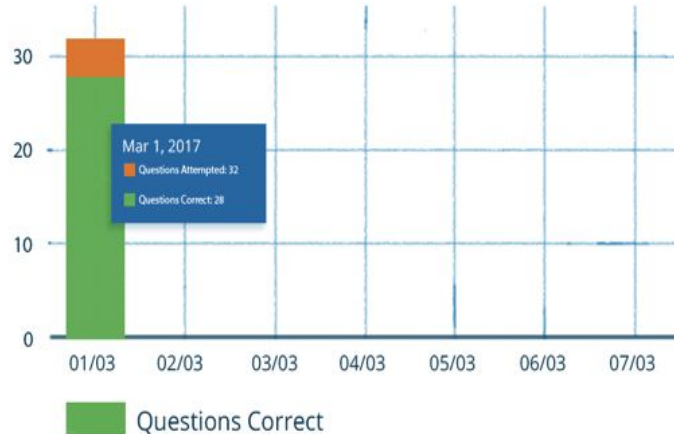
# This is the Student Dashboard

This number will go up as you cover the content.  
It tells you how far through the course you are.

REVIEW

USAGE

SWIMLANES



< Last 30 days >



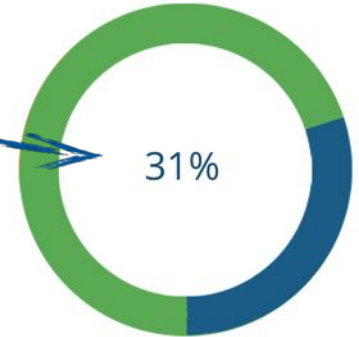
Total activity  
45 days

Average test/day  
8 tests

Correct answers  
487 of 673

This is your  
Performance Wheel

PERFORMANCE  
WHEEL



UP NEXT  
"AQA [T] B104:  
Bioenergetics"

Start Quiz

Skip

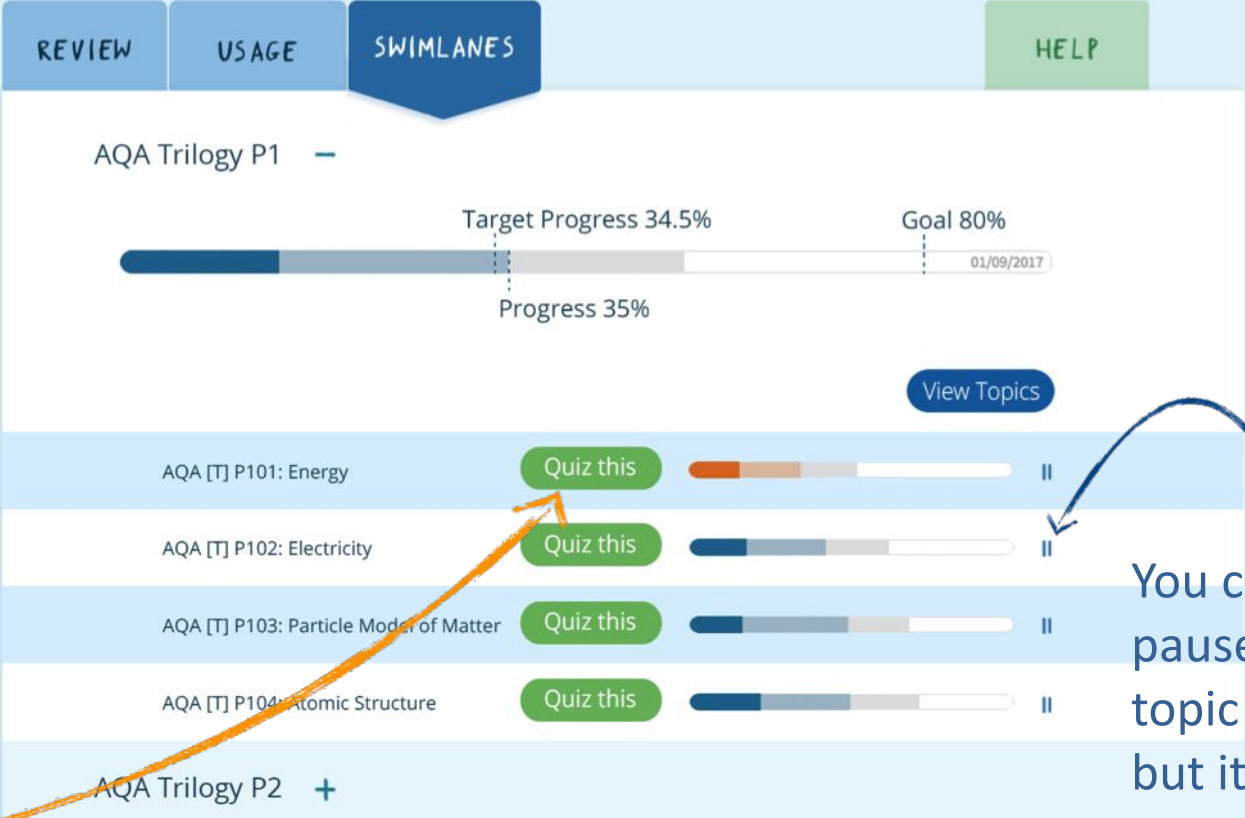
# Reviewing Your Quizzes

You can review a quiz after you've done it here. You can check which answers you got wrong and spend a bit more time with the answers.

REVIEW	USAGE	SWIMLANES	HELP
Click to review a test		Score	Time & Date
AQA [T] B207: Ecology		3/6 Correct	09:23 24/03/17
AQA [T] C105 Energy Changes		1/4 Correct	09:19 24/03/17
AQA [T] C208: Chemical Analysis		4/6 Correct	08:50 24/03/17
AQA [T] B207: Ecology		4/4 Correct	17:21 23/03/17
AQA [T] B104: Bioenergetics		2/4 Correct	17:18 23/03/17
AQA [T] C208: Chemical Analysis		3/4 Correct	17:10 23/03/17



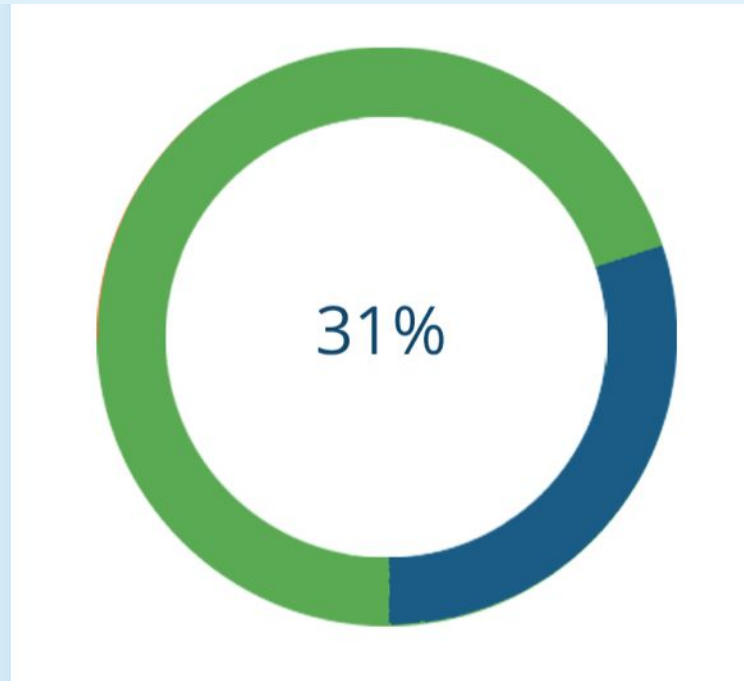
# The Swimlanes



You can choose to do a quiz on a specific topic by clicking 'Quiz this'

You can pause a topic here, but it will un-pause overnight

But all you really need to worry about is doing enough quizzes to keep your wheel BLUE or GREEN!



Teachers Receive  
Detailed Feedback

# Teachers can quickly see who is on track and who is behind



This stripe shows the same information as your progress wheel

With this graph, teachers can see exactly which where you are doing well and where you are struggling.



# SIGNING IN - go to [www.tassomai.com](http://www.tassomai.com)

[COURSES](#)[HOW IT WORKS](#)[PRIVATE SUBSCRIBERS](#)[SCHOOLS](#)[EXAM RESULTS](#)[SIGN IN](#)**LOGIN**

Username

Password

**Submit**

[Forgot your password?](#)  
[Register with a code](#)

Your username is  
your school email  
address  
All Y11 students  
should know their  
passwords but any  
issues please let us  
know



## Now you can get started!

Your first mission is to do your **QUICK START QUIZZES** which will help you to 'colour your wheel' in quickly.

Try to get the wheel blue or green!

Try to complete **250 questions each week** to stay on track for the year...

# So remember...

Regular, focused use of Tassomai will save stress in the long term.

Let Tassomai do the organising for you.

A little every day keeps the red wheel at bay!

It won't be long before you KNOW you know it!