

Welcome to AQA A Level Art & Design

Endorsements:

FINE ART

&

PHOTOGRAPHY

Head of Department

Clare Darley

KS5 teachers

Sophie Cardo-Moreno / Stacey Farrar

A Level Fine Art & Photography Objectives:

- To have a greater understanding of the course requirements and expectations
- To have a clear understanding of the coursework and exam requirements
- To understand the Assessment Objectives

KS5 Art & Design





At KS5 we run two endorsed papers:
Fine Art and Photography:

AQA A Level **FINE ART**

AQA A Level **PHOTOGRAPHY**

Our A level students are trained on a rigorous schedule that equips them with the necessary skills to cope with further education courses and the workplace



AQA A Level **FINE ART**

Fine art Students should produce practical and critical/contextual work in one or more areas of study, for example:

drawing, painting, mixed-media, sculpture, ceramics, installation, printmaking, moving image (video, film, animation) and photography

AQA A Level **PHOTOGRAPHY**

Students should produce practical and critical/contextual work in one or more areas of study, for example:

portraiture, landscape photography, still life photography, documentary photography, photojournalism, fashion photography, experimental imagery, multimedia, photographic installation and moving image (video, film, animation)

Art offers a broad education prior to the opportunity to further focus upon your chosen area.

Universities around the country offer
BA Honours Degrees in a variety of
subjects under **Fine Art:**

**Textiles, Fashion, Mixed Media,
Photography, Film, Video,
Animation, Model Making, Product
Design, Sculpture, Ceramics,
Jewellery Architecture and many**



To progress to a Visual Arts degree students would normally be required to take a Foundation Diploma in Art & Design prior to specialising within chosen disciplines.

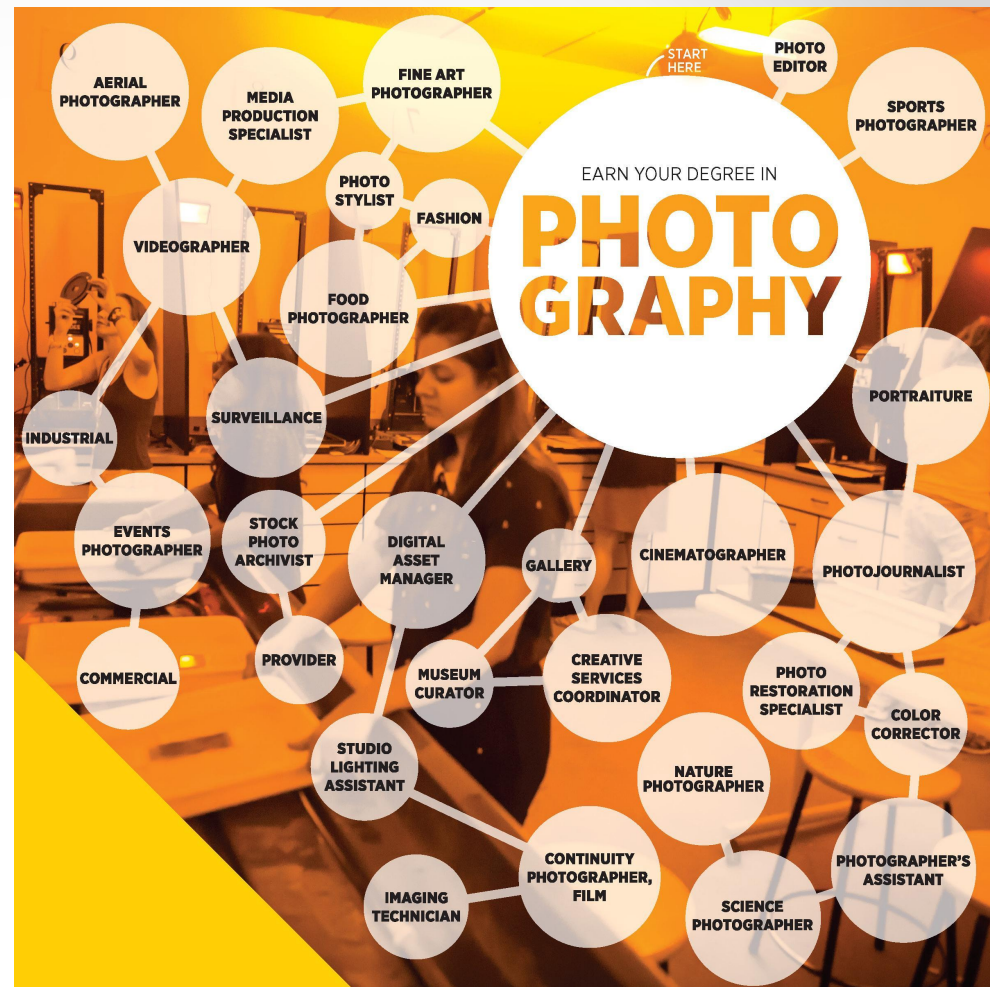
What could I do next?

Students can progress to A Level

Photography.s

There are higher education course in wide range of **Visual Arts specialisms** such **Animation, Film, New Media and Fine Art.**

Opportunities to complete an **apprenticeship** in the related field or to have a **career** as a **fashion photographer, photo journalist** or **forensics photographer.**



Photographic skills and techniques can be directly applied to personal projects such as digital work to support online work with websites as well as freelance work.

STUDYING ART & PHOTOGRAPHY



A Level students will need to demonstrate **BREADTH** and **DEPTH**.

BREADTH is achieved by engagement in the creative process by exploring a range of ideas, skills and materials in order to develop their own visual explorations.

DEPTH is achieved through sustained personal involvement in selected visual processes, resulting in significant artistic attainment.





QE ART DEPARTMENT STUDENT EXPECTATIONS

By opting to do an A Level FINE ART / PHOTOGRAPHY course students are making a commitment.

We are committed to providing students with the best possible opportunities to develop their artistic and creative abilities.

In return our expectation is that students will do their best at all times and work effectively to reach their potential.

**COMMITMENT / PREPARED / AMBITIOUS /
COLLABORATIVE / PERSISTENT / INQUISITIVE /
IMAGINATIVE / INDEPENDENT / PROACTIVE**



INDEPENDENT STUDY



- A minimum of 1 hour independent study after each lesson
- Study periods should be used effectively
- Students are expected to independently take opportunities to visit Art galleries and museums to help inform their work *(Clearly due to the current situation this is not possible however we would encourage students to access online galleries and where possible contact artists directly)*
- Please note that Photography students are expected to take a minimum of one shoot each week.
- There is always the potential for extension work. This might be wider research, reading, personal projects, or practical experimenting with materials / camera

AQA A Level Art & Design

Fine Art & Photography Specification Overview

Assessments

Component 1: Personal investigation

What's assessed

Personal investigation – 7201/C, 7202/C, 7203/C, 7204/C, 7205/C, 7206/C

Assessed

- No time limit
- 96 marks
- 60% of A-level

Non-exam assessment (NEA) set and marked by the centre and moderated by AQA during a visit to the centre. Visits will normally take place in June.



Component 2: Externally set assignment

What's assessed

Response to an externally set assignment – 7201/X, 7202/X, 7203/X, 7204/X, 7205/X, 7206/X

Assessed

- Preparatory period + 15 hours supervised time
- 96 marks
- 40% of A-level

Non-exam assessment (NEA) set by AQA, marked by the centre and moderated by AQA during a visit to the centre. Visits will normally take place in June.

ASSESSMENT OBJECTIVES:

AO1 Develop ideas through sustained and focused investigations informed by contextual and other sources, demonstrating analytical and critical understanding.

AO2 Explore and select appropriate resources, media, materials, techniques and processes, reviewing and refining ideas as work develops.

AO3 Record ideas, observations and insights relevant to intentions, reflecting critically on work and progress.

AO4 Present a personal and meaningful response that realises intentions and, where appropriate, makes connections between visual and other elements.

•

•

In summary:

AO1 Develop ideas informed with excellent research and understanding

*RESEARCHING / COLLATING / UNDERSTANDING / ANALYSING /
CONTEXT / INFORMED*

AO2 Develop original work, experimenting with a range of media and techniques

EXPERIMENT / APPLY TECHNIQUES / REVIEW / MODIFY / REFINE

AO3 Record ideas, observations and insights at every stage

This might include using original imagery, text, drawings, audio/film recording...

RELEVANCE / REFLECTIVE / COMPARE / CONTRAST

AO2 Produce personal, informed and meaningful work that you care about and can fully justify

*PERSONAL / INDIVIDUAL / REALISE INTENTIONS / HOLISTIC
UNDERSTANDING / COHESION*



A Level Art & Photography Assessment Objectives

A01 **EXPLORE**
DEVELOP
DEVELOP IDEAS
INVESTIGATE & RESEARCH
OTHER ARTISTS WORK
ANALYSE
ANNOTATE

A02 **REVIEW**
REFINE
EXPERIMENT
EXPLORE DIFFERENT IDEAS
AND MEDIA
A RANGE OF TECHNIQUES
& PROCESSES
SELECT
IMPROVE

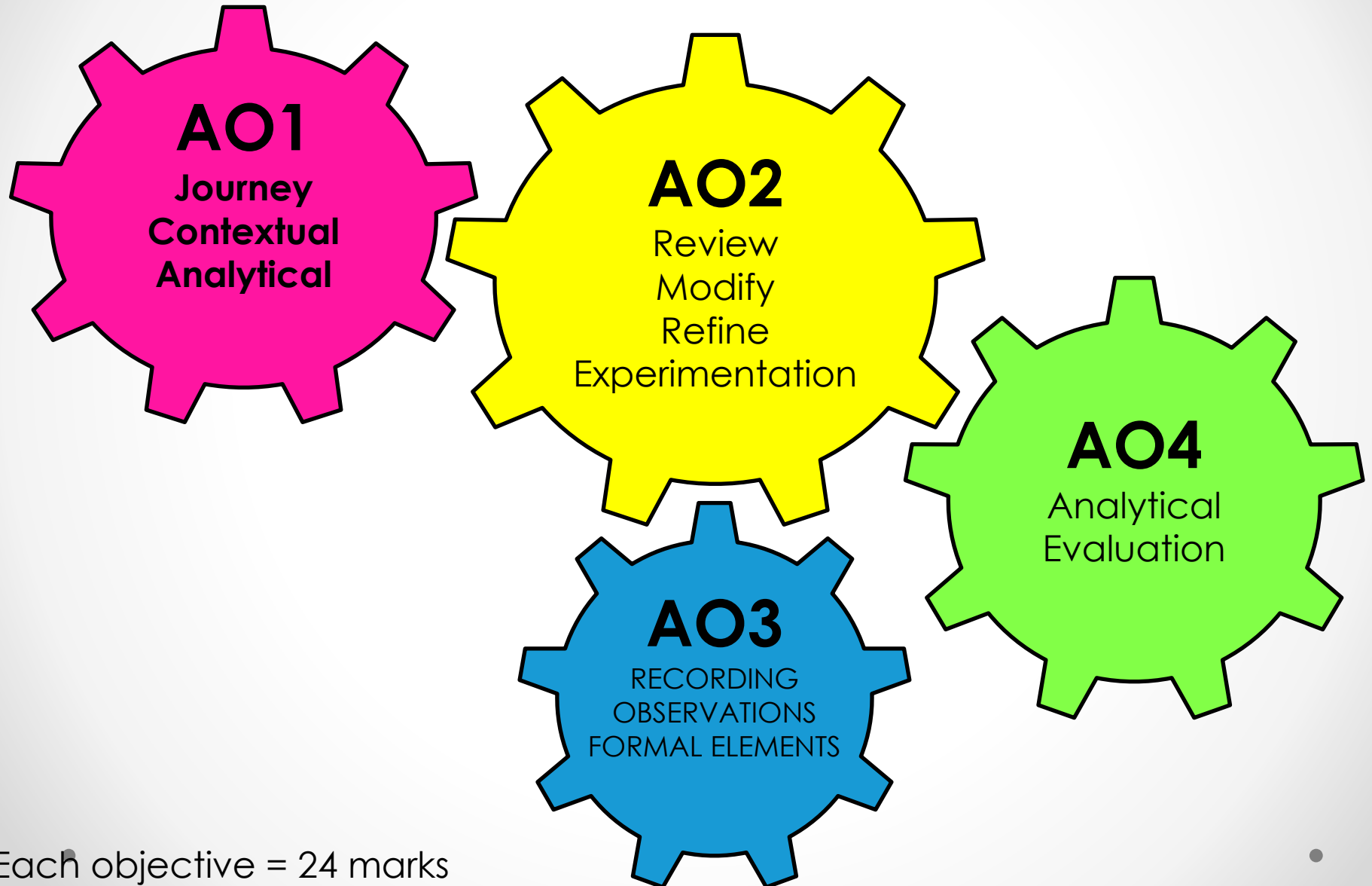
A03 **EVIDENCE**
RECORD
PRESENT IDEAS
PRIMARY OBSERVATION
DRAWING, PAINTING,
PRINTING, PHOTOGRAPHY,
WRITING, PHOTOGRAPHY...
ANNOTATE
DIFFERENT MEDIA

A04 **OUTCOME**
PRESENT
FINAL IDEAS
DEVELOPED AS PLANNED
CLEARLY RESPONDS TO
ARTISTS EXPLORED
CONNECTION
CONCLUSION



ALL THE ASSESSMENT
OBJECTIVES WORK TOGETHER
LIKE PARTS OF A JIGSAW

Assessment Objectives



Each objective = 24 marks

A LEVEL FINE ART & PHOTOGRAPHY

COMPONENT 1: PERSONAL INVESTIGATION

This is a practical investigation supported by written material.

Which must include:

Practical investigation, into an idea, issue, concept or theme, supported by written material. You must independently decide upon the focus of the investigation and must lead to a **Finished outcome** or **a series of related finished outcomes**.

- **in-depth study developing a sustained line of reasoning from an initial starting point to a final realisation.**
- **clear development** from initial intentions to the final outcome or outcomes.
- **research and develop ideas and relate your work in meaningful ways to relevant critical/contextual materials.**
- **informed by an aspect of contemporary or past practice** of artists, photographers, designers or craftspeople.
- **The written material must confirm understanding of creative decisions, providing evidence of all four assessment objectives**

COMPONENT 1: PERSONAL INVESTIGATION ESSAY



The written material must:

- ✓ be a coherent and logically structured extended response of between 1000 and 3000 words of continuous prose
- ✓ include specialist vocabulary appropriate to the subject matter
- ✓ include a bibliography that, identifies contextual references from sources such as: books, journals, websites, through studies of others' work made during a residency, or on a site, museum or gallery visit
- ✓ be legible with accurate use of spelling, punctuation and grammar so that meaning is clear
- ✓ You must identify and acknowledge sources which are not your own

COMPONENT 2: EXTERNALLY SET ASSIGNMENT

The work will be progressed as in Component 1; however you will be required to work independently and under examination conditions for a final 15 hours developing outcomes.

A LEVEL ESA Overview:

Preparatory Period – from 1 February

Select one question from the exam paper

Work should be presented in any suitable format such as mounted sheets, sketchbooks, journals etc...

COMPONENT 2: EXTERNALLY SET ASSIGNMENT



The work will be progressed as in Component 1; however you will be required to work independently and under examination conditions for a final 15 hours developing outcomes.

A LEVEL ESA Overview:

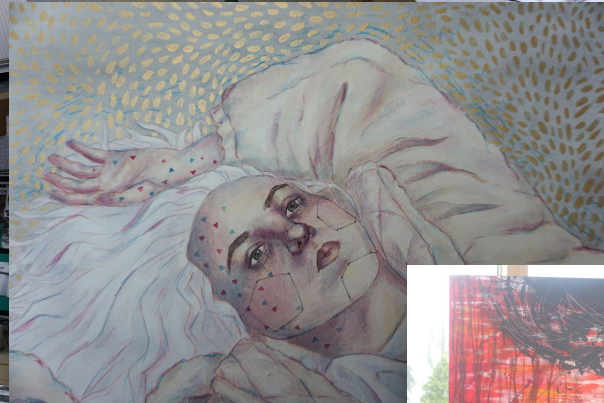
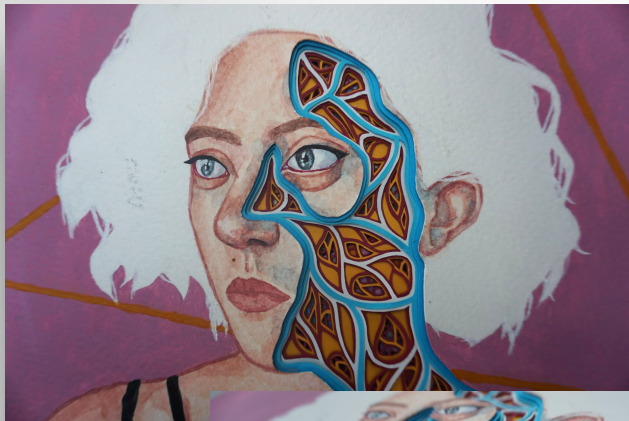
Preparatory Period – from 1 February

- Select one question
- Following the preparatory period you will **complete 15 hours of unaided, supervised time.**
- In the 15 hours you must produce a finished outcome or series of related finished outcomes,
- **You must stop work on your preparatory work as soon as the first period of supervised time starts.**
- **You may refer to your preparatory work in the supervised time, but it must not be added to or amended.**
- Work should show clear evidence of all four assessment objectives.

A guide to important dates and deadlines



DATE	Key Dates & Deadlines A Level FA & PG
Year 1	
Sep 2022 – April 2023	Workshops & mini projects
April – June 2023	Component 1 Personal Investigation Part 1
June	Year 13 Entrance Exams 5 Hours
June – July 2023	Introduce Essay & Component 1 Personal Investigation
Year 2	
July 2023 – Feb 2024	Component 1 Personal Investigation Part 2
November 2023	Essay Deadline
January 2024	10 Hour PPE Resolve Outcomes Component 1
Feb – May 2024	Component 2 Externally Set Assignment
May 2024	Externally Set Assignment 15 Hour Exam and Deadline
May 2024	Review Component 1
May 2024	Final Deadline Component 1




A Level
FINE ART



A Level PHOTOGRAPHY





If you have any questions raised from this presentation then please do get in touch with any member of the Art department?

Head of Department

Clare Darley

cdarley@queenelizabeths.com

KS5 teachers

Sophie Cardo-Moreno / Stacey Farrar

scardo-moreno@queenelizabeths.com

sfarrar@queenelizabeths.com

