

# Sixth Form Bulletin

July 2026 edition

Be 1% better each day



# Key Dates

8th July	JP Morgan workshop visit
10th July	Safe Drive assembly
22nd July	ACE Games
22nd July	End of term!
13th August	A level Results Day
1st - 2nd September	Inset days
3rd September	Return to School



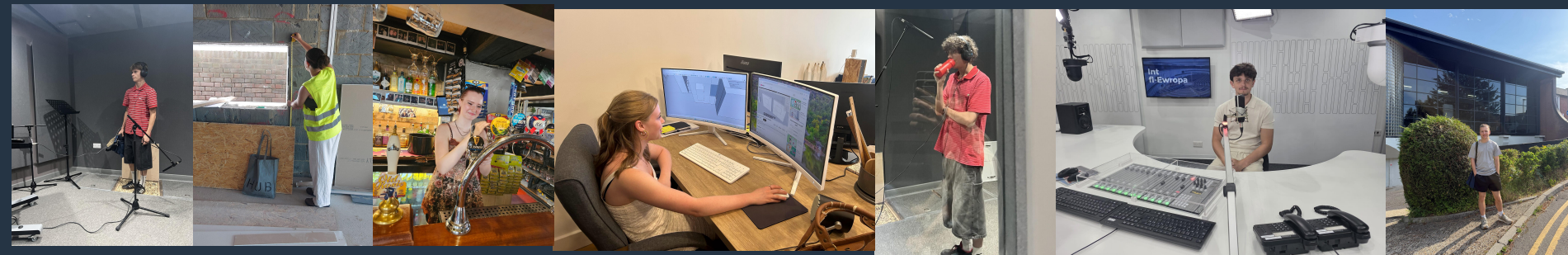
**Sixth Form classes end at 3:10pm**

*'Be 1% better each day'*

# YEAR 12 WORK EXPERIENCE

**Well done on completing your placements!**

**Please make sure you have completed your reflection - there are still over 60 of you that haven't completed this on Unifrog!**



*'Be 1% better each day'*



# YEAR 12 DESTINATIONS



Please keep checking the Year 12 Google Classroom for Destinations & Careers opportunities & ideas.

- Apprenticeships
- Application guidance
- Placements
- Online events and seminars
- Open Days
- Personal Statement ideas



*'Be 1% better each day'*



# 16-19 Bursary 2026/27

If you are currently receiving the Bursary please ensure you sign the 2026/27 letter sent out via email for Year 13  
Please return to Mrs Riding by the 22nd July.



*'Be 1% better each day'*



# Car Parking Permit

Please ensure if you are driving to school that you have completed the google form to obtain a parking permit Parking Permit 2025/26

Parking is only available in the Leisure Centre.

Students should never park in the staff car park, this includes the one by reception under the tree line and in the middle.



*'Be 1% better each day'*



# YEAR 13 JOB OPPORTUNITY

**Teachers Building Society** is seeking a dedicated and enthusiastic **Customer Service Representative** to join our dynamic team.

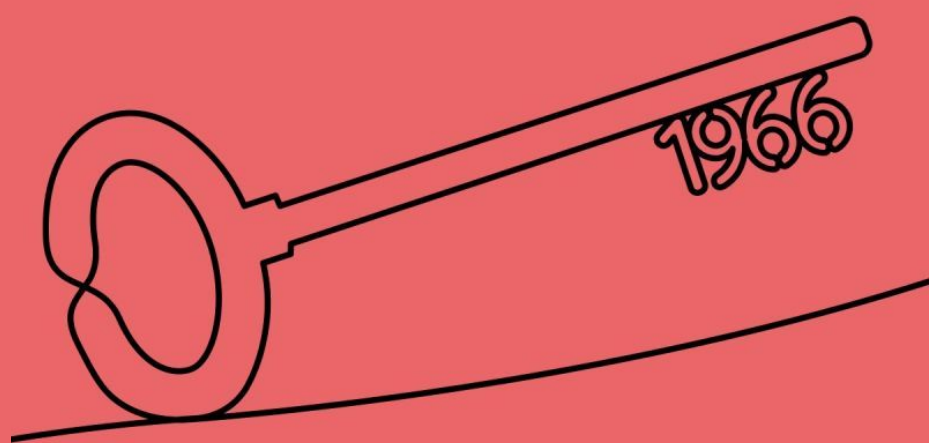
They got in touch as they are keen to employ local students straight out of Year 13.

In this role, you would provide telephone and administration support to the Society's new and existing savings and mortgage customers.

They are looking for someone who is enthusiastic, has good judgement and a willingness to learn.

Find out more here:

<https://www.teachersbuildingsociety.co.uk/a-bit-about-us/join-us/customerservices-associate>



 **Teachers**  
**Building Society**  
Opening doors for teachers. Since 1966

Let Mrs Ridley know if you'd be interested and we can put you in touch!



WE BELIEVE THAT  
NO CHILD'S DESTINY  
SHOULD BE DEFINED BY  
THEIR BEGINNING

*Hi all*

*As you know we are supporters of Her Wealth Network, a network that Kate Webber, our NED, established a few years ago.*

*There is an event coming up, which is encouraging young women into financial services. On Monday July 13, Her Wealth Network and London Stock Exchange have partnered to create an incredible opportunity for those in Year 13, University or Early Careers (see link for more details) - [LEARN - Her Wealth Network](#)*

*Would really appreciate your support*

Thanks for reading this far!  
Kind regards,

Hayley