

Year 9 Welcome Evening

September 2026

Thursday 30th April 2026

Mr Thomas Neill – Headteacher

Mr Chris Humphreys – Deputy Headteacher

Mr Matt Oldfield – Assistant Headteacher

Mrs Kim Ashby – Assistant Headteacher



Notices

- There is not a planned fire drill, if the fire alarm sounds, please exit by the fire exits on the left hand side and assemble on the grass area. Our staff will be available to guide you.
- A copy of these slides, and links to other information including a new starter pack will be sent to you all by email and put onto our website.

Objectives of this evening

- To welcome you to the QE community
- To share important information about the school and our improvement priorities
- To introduce you to key members of staff
- To explain the transition process and give you time to ask questions

It is a privilege to welcome you to our community

The school has been on a journey of rapid improvement.

Better behaviour

Higher attendance

Improved exam results

Our curriculum is shaped by our core values

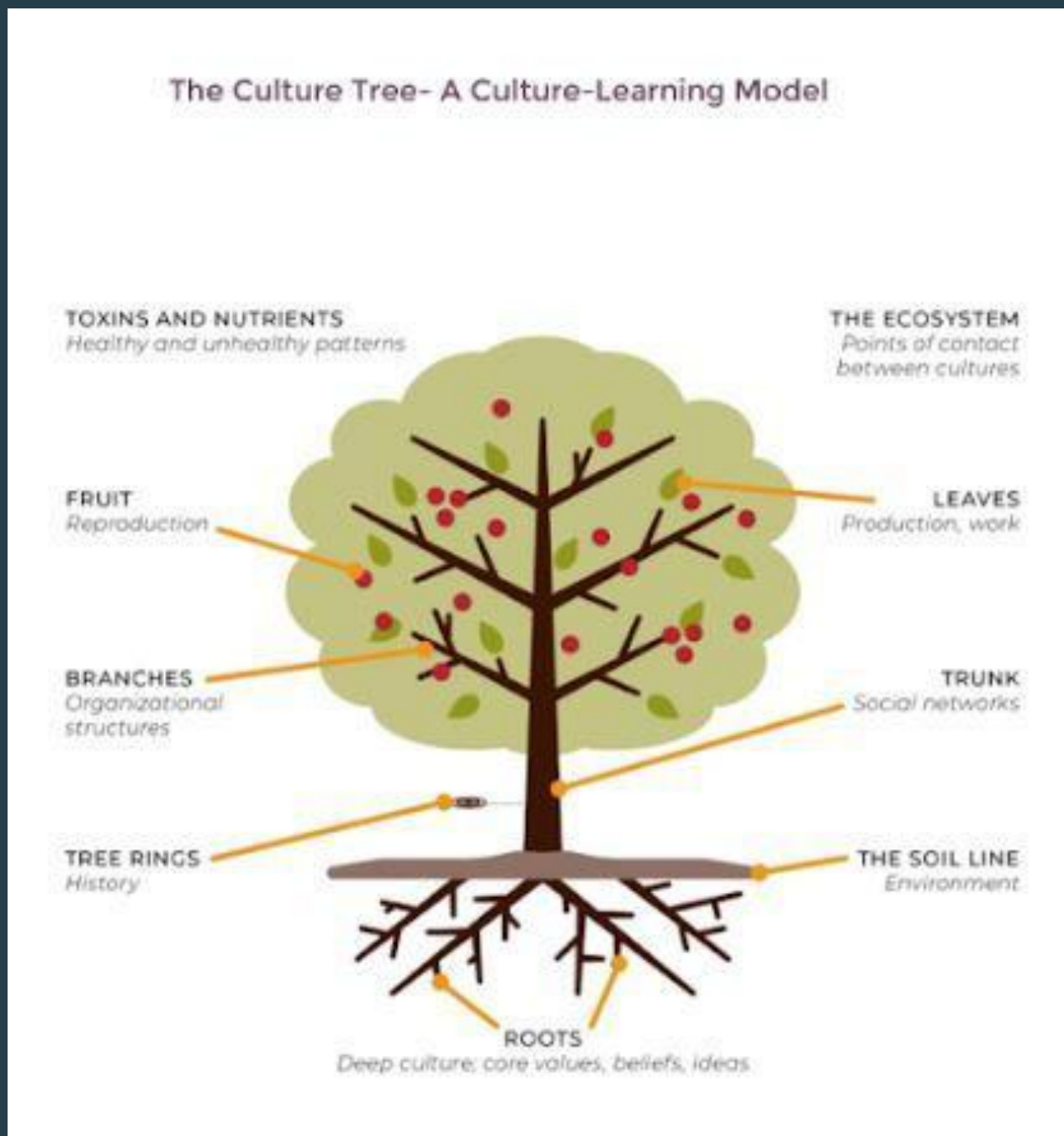
Hope is a Christian value and a promise to our community: we want every student to realise their full potential.



What do our values look like day-to-day?

- Emphasis on 'old fashioned' values: working hard, good manners and respect for each other
- Positivity: be the best version of yourself every day
- A focus on care and belonging
- Curriculum as a tool for social justice. Cultural and economic equality

What do our values look like day to day?



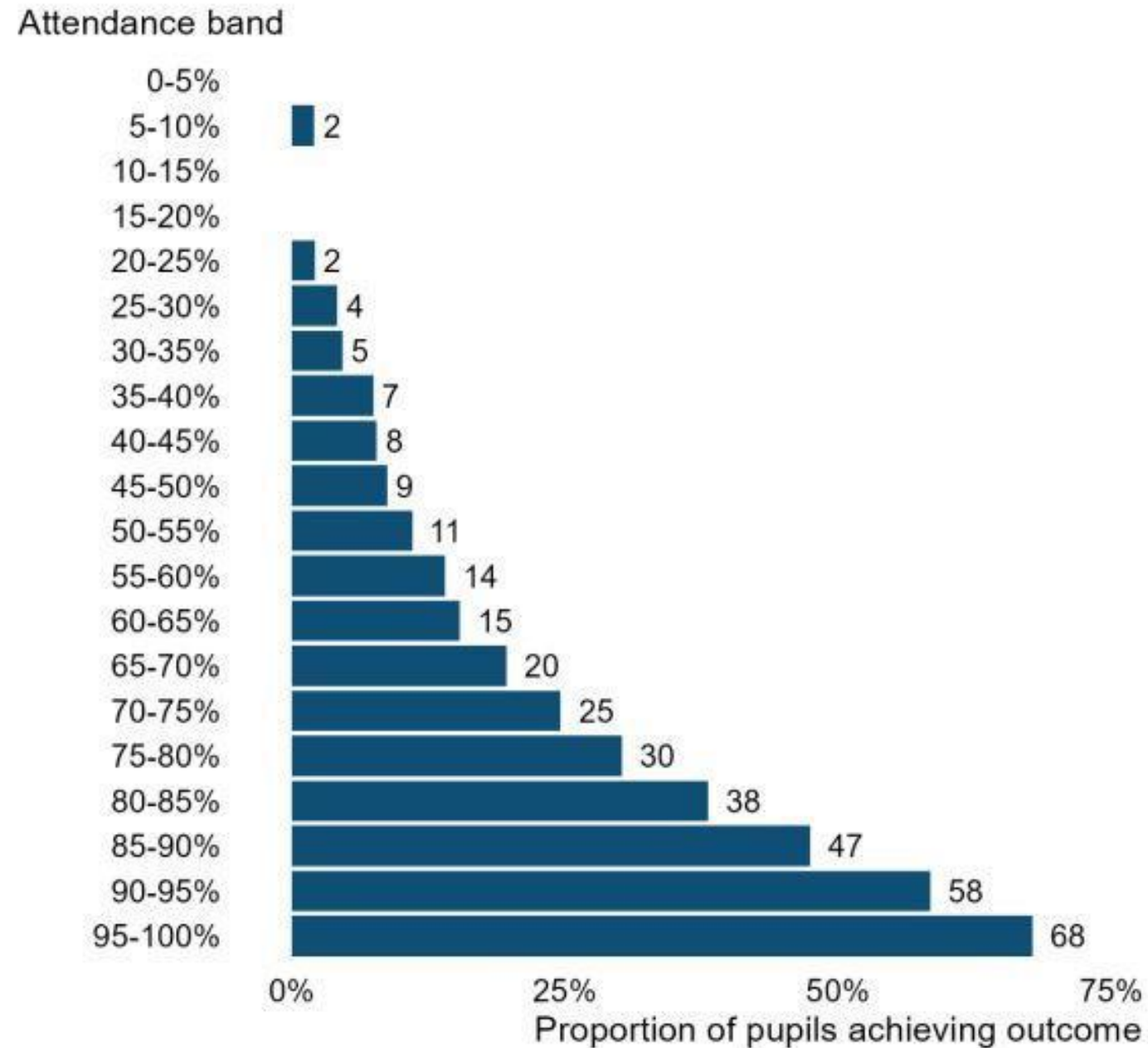
Think of our school culture as a living organism. We can have a **strategy**: targeting year grade 5s, calling absent students, meeting with parents, using mini whiteboards. These are the things we see on the surface: leaves and branches, etc.

However, unless we have a strong culture, then our school can't grow and develop.

Culture is 'how does it feel to be a student here' and 'how does it feel to work here'. Culture is the roots of the tree.

Why culture matters: care and belonging

Figure 1 Proportion of pupils in each 5% attendance band for Year 6 achieving expected standard in RWM at the end of KS2

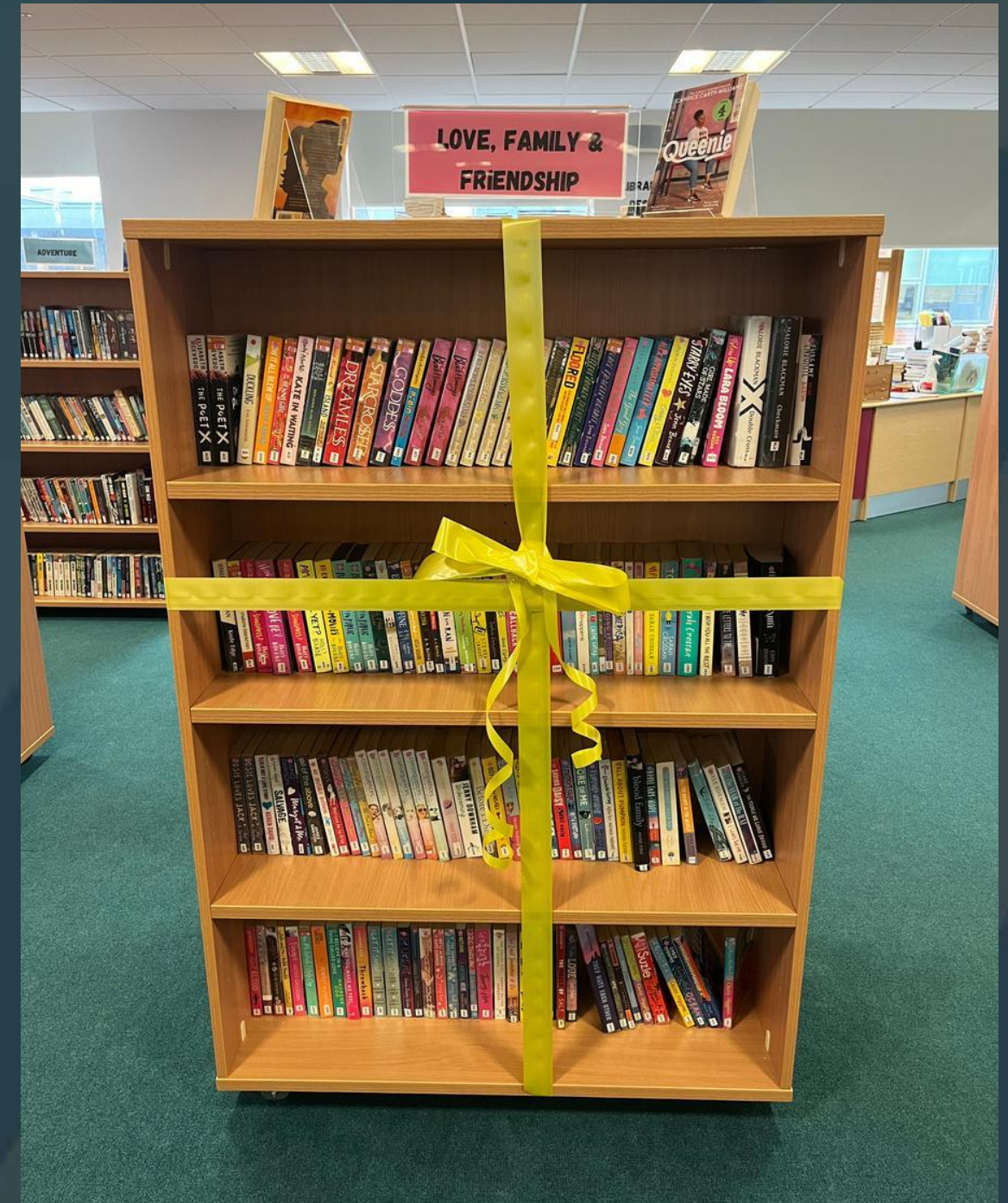


It's never too late.

54% of students who were persistently absent in year 10 and got above 90% in year 11, went on to get five GCSEs at grade 4+.

Reading: why do we do it?

- Comprehension: what students can understand
- Fluency: what students can express
- Vocabulary production: what students can use to build meaning



Reading: why do we do it?

- Reading is the single most powerful tool for closing inequality gaps that open up in childhood. These gaps subsequently lead to poor life outcomes in adults
- Since 2015, there has been a 28% increase in the number of children leaving education without substantive qualifications. Last year it was nearly 100,000 children.
- Children in receipt of free school meals are over twice as likely as non FSM students to leave school age 19 without any substantive qualification, at 37% vs 15%. This gap is increasing.

Uniform: 'we don't get a second chance to make a first impression'.



We are committed to reducing the cost of school uniform and to support this we are launching some small changes for students joining Year 9 in September.

Wearing our school uniform correctly is an important part of promoting a smart, business like attitude. It helps set high standards and prepares students for the professional world. Please ensure your child wears the correct QE bespoke trousers or skirts without any modifications, black socks, and proper leather style school shoes

Thank you for supporting our high expectations.

Our approved suppliers are available this evening:

Bartletts in Wimborne for Uniform and Star Sportswear for PE

Parent and Student Views

The school gives my child the right support to enable them to learn well	91%
When I have raised concerns they have been dealt with properly	91%
When the school makes decisions it has the child's best interests at heart	81%
Students report a strong sense of feeling safe in school and say that their peers are respectful of them.	

Silver Rights Respecting Schools



Student leadership

The right to an education

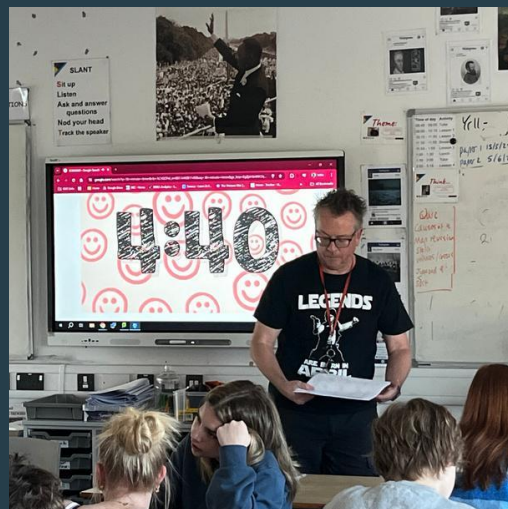
Advocacy and justice: support for causes

Mr C Humphreys

Deputy Headteacher

Core Principles

- Students' academic progress
- Excellent attendance and participation
- Personal development



Year 11 After School Revision Sessions

The following core GCSE subjects will be up and running with their after school revision sessions as of Monday 13th January from 3.20-4.20pm!

Science- Monday 

Maths- Tuesday 

English- Wednesday 

Science and Maths located in E block, English in C block. No pre booking required.

QueenElizabeth's 



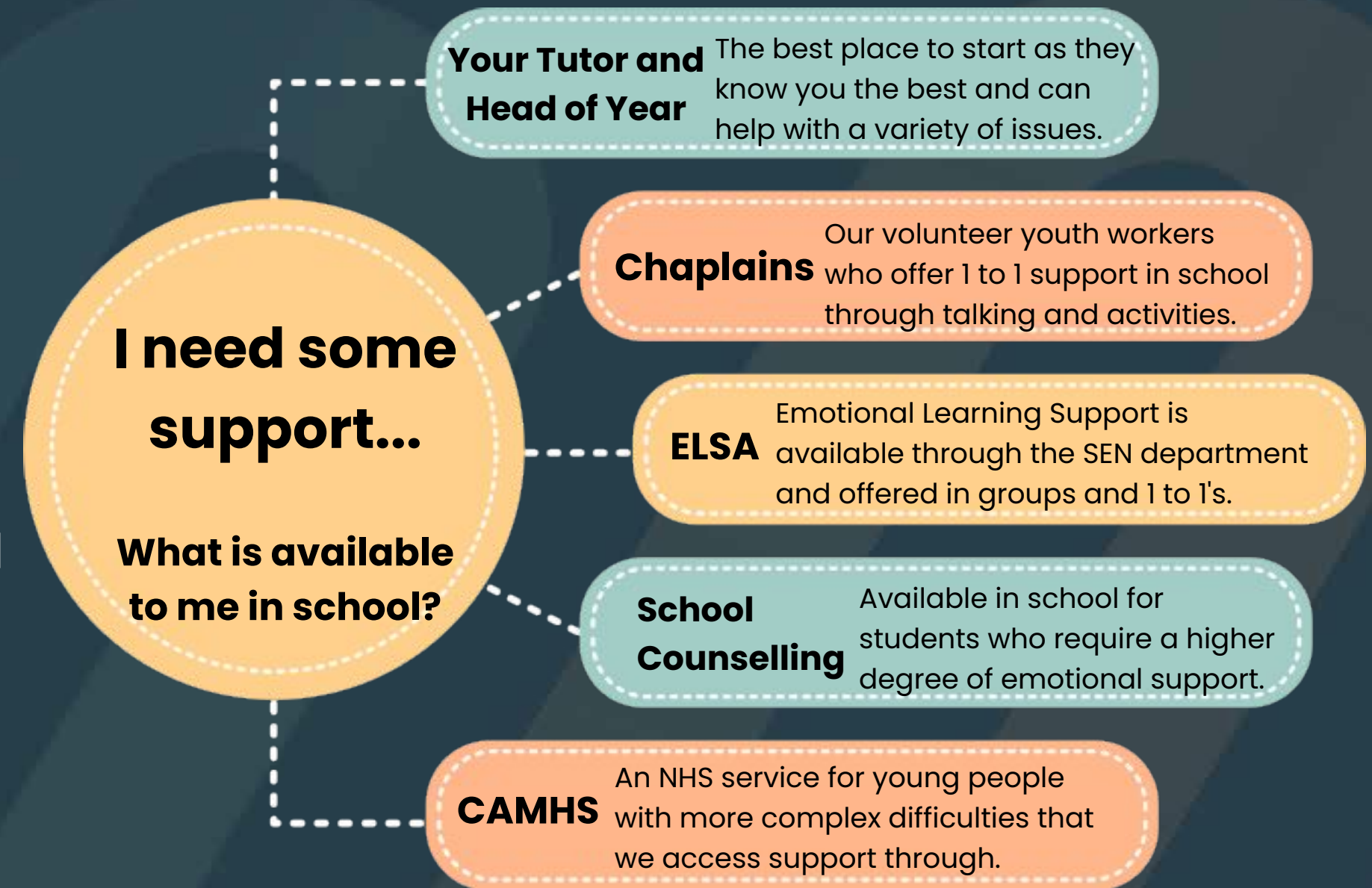
Support at QE

Student health and wellbeing is of paramount importance, students have access to the following support at school;

- A tutor who will lead their progress and wellbeing for their time at QE
- Head of year; directing academic progress and pastoral care
- Access and participation in dedicated PSHE and Curriculum 4 Life sessions
- Mentoring access from our dedicated House Chaplains

Leadership on all areas of safeguarding from our **DSL- Kim Ashby** (Assistant Headteacher).

In all instances of support on health and wellbeing, please contact your child's tutor.



Communication

We recognise that strong communication between home and school is essential for student success.

Over the past year, we have taken meaningful steps to improve how we connect with families. This includes more timely updates, streamlined newsletters and year group communications, and an updated website with clearer event calendars and important resources.

We've also increased opportunities for two way communication, such as parent surveys and regular feedback sessions with school leadership.

These changes are part of our commitment to ensuring every family feels informed, heard, and supported throughout the school year.

**SEND Coffee Mornings
at QE**

**Thursday 4th July
9am-10am**
(year 9 moving to year 10)

The QE SEND Team wishes to invite parents/carers of year 9 SEND pupils to a coffee morning for an opportunity to discuss their transition into year 10.

Please join us and meet other parents and carers who understand SEND challenges and strengths.



**Thursday 11th July
9am-10am**
(year 8 joining year 9)

The QE SEND Team wishes to invite parents/carers of year 8 SEND pupils to a coffee morning for an opportunity to discuss the transition from middle school ahead of the September start.

Please join us and meet other parents and carers who understand SEND challenges and strengths.

Please email knorth@queenelizabeths.com to confirm your attendance to one of the above

Communication

As a new Y9 parent/carer, you will receive a request to join the **Arbor App** in September.

When accessing the App you will be asked for specific consents/permissions. One of the consent categories will be for electronic communications from the school which will allow you to receive general information.

Electronic communications from the school will include important information, for example; letters from the Headteacher, information about immunisations, QE News (our newsletter), school closure days/times, whole school and year group information, trips information.

If you decide not to give consent please understand that you may be missing out on key information.

Diary Dates...
Please see key dates below for the next few months. (P- Parents Invited)
The updated calendar is also accessible on our [website](#).

Monday 31st March-Friday 4th April
Year 10 and 12 Mock Exams

Thursday 3rd April
Year 12 Destinations Evening (P)

Monday 7th-Monday 21st April
Easter Holidays

Monday 7th-Friday 11th April
Year 11 History Trip to Berlin

Tuesday 8th-Sunday 13th April
Drama Trip to New York

Tuesday 22nd April
Inset Day

Wednesday 23rd April
First day of term

Thursday 24th April
Year 9 Options Evening (P)

Thursday 1st May
New Year 9 Welcome Evening (P)

Monday 5th May
Bank Holiday

Thursday 15th May
Year 10 Parents Evening (P)

Monday 26th-Friday 30th May
Half Term

Monday 2nd June
First day of term

2024/25 and 2025/26 term dates

Extra Curricular- Summer 2025
We have published our new extra curricular activities [here](#).
Students are not required to book on to these and should you have any questions please contact office@queenelizabeths.com

Wake up Wednesday : What parents and educators need to know about BlueSky social app

QueenElizabeth's School QE

QE NEWS- MARCH 2025
EDITION 17- 28.03.25

Dear Parents and Carers,
I'm pleased to bring you the latest edition of QE News which will be the last one of this term. You can also view my video message [here](#).
I would like to wish our QE community a Happy Mother's Day this weekend and also a wonderful Easter break when it arrives. We look forward to welcoming our students back on **Wednesday 23rd April**.
Warm regards, Mr Neill, Headteacher.

Arbor App and Communication
Thank you for engaging with our new school system and for your patience whilst we navigate this.
As you are aware, we have been updating the student communication and consents. Should you have any questions about this or require support please contact arborapp@queenelizabeths.com.
We look forward to introducing further features to you.

School Talk Trends...

- Have you completed your [parent survey/2](#).
- Year 11 Easter revision programme [here](#)
- [Year 9 tutor team](#)
- [Year 10 tutor team](#)
- [Year 11 tutor team](#)

Community Talk Trends...

- Easter activities and events [here](#)

Lost Property!
There is a high volume of lost property in our main office, please encourage your child to check for any missing items such as school uniform, PE kit, shoes, coats, pencil cases and waterbottles.
Anything remaining at the end of next week will be disposed of or donated.

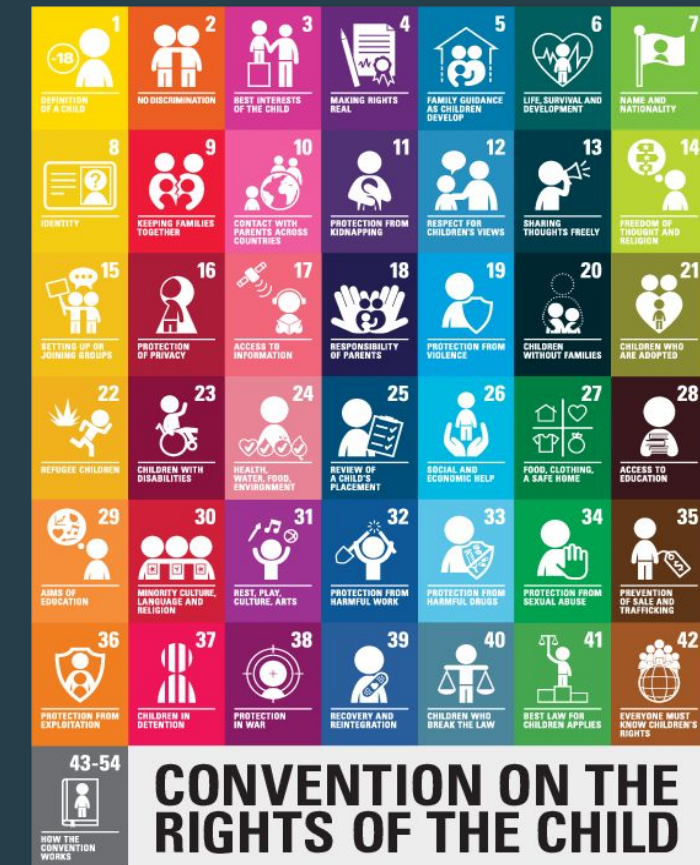
Personal Development: tutoring

The start of the day is key to ensuring the students are ready for learning and the high expectations are set.

Students expected on site at 8.40am

Registration starts at 8.45am

- Checking uniform each day
- Knowledge organiser and equipment checks
- Daily act of collective worship, with a reflection
- Rights respecting school activities
- DEAR reading programme
- Year assemblies
- Supporting tutee



- C4L
- Careers
- Extra Curricular
- Student Leadership
- QE Community

Personal Development: events

Examples of events our students are involved with:

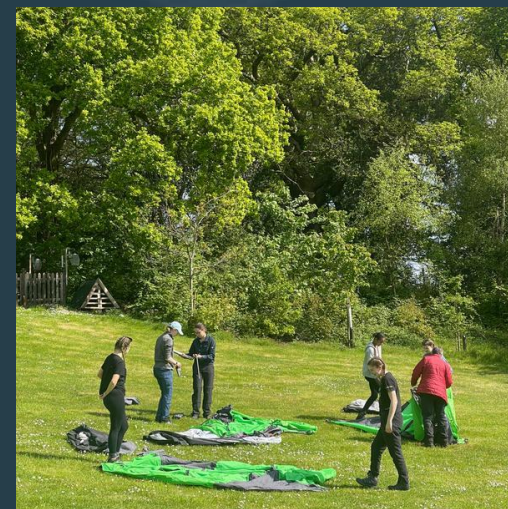
Duke of Edinburgh awards

Christmas concerts in Wimborne Minster

Sports competitions and tournaments

Charitable events for local fundraising

Local and foreign trips



Transfer Timetable and Information

- Assemblies at middle schools (Week of 2nd June 2025)
- **'Transfer Evening' for students, parents and carers on Wednesday 24th June**, where information on tutor groups will be shared and arrangements for transfer day outlined.
- **Transfer Day– Friday 26th June–** A full day at QE for all students joining in September.

Please complete all required fields including a photograph on Application– our online portal to collect student information and contact details.

Languages

- As part of their curriculum, students study either French or Spanish in Year 9.
- Ahead of joining, please indicate the preference you have for which language you would like your child to study.
- [Y9 Language preference form](#)

Staff and Support

This evening the following staff will be available:

- Senior Leadership Team
- SENDCO
- Admissions Officer – Mrs Hobson

Uniform information

Bartletts and Star Sports

Transport information

Resource Links:

[Dorset Council- School Transport](#)

[Dress Code and Uniform Guidance](#)

[Current Extra-Curricular Activities](#)

[Free School Meals and Pupil Premium](#)

[Key Documents and Policies](#)

Key Contacts:

office@queenelizabeths.com

admissions@queenelizabeths.com