



Welcome to
Queen Elizabeth's School
Sixth Form Open Evening
13th November 2025



Be part of a journey that thousands have taken before you

If you choose us, you will be joining a community with over 500 years of history.





This is an exciting time for the school.

We are delivering rapid improvement whilst retaining what makes the school a special place to belong.





What we've focussed on:

- Culture and Values
 - High Expectations: Routines and disruption free-learning
 - Excellence in our teaching and curriculum
 - Community and Care
-



Culture and Values: We are a community



Student voice and students' rights

Student voice and leadership are at the heart of what we do.

We have thriving School Council and student leadership groups.



**RIGHTS
RESPECTING
SCHOOLS**



Excellence in our Teaching and Curriculum

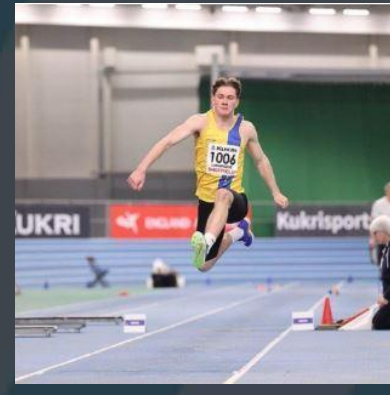
Strong teaching practice, rooted in scientific research about how students learn best.

Spend time talking to staff about our curriculum tonight: we love what we teach!





Community and care





Exam Results and Universities

- At A Level our 'Value Added' is now at national average after being below last year. This means students achieve their potential.
- We send students to the very best universities, including Oxbridge. Students have also gone on to study medicine, architecture and veterinary science from the 'Class of 2025'.
- Our enrichment programme, EPQs and D of E ensure you are ahead of your peers if you come to QE when applying for university places, jobs or apprenticeships.

Miss Sophie Dean Head of Sixth Form

Welcome to our Sixth Form



'Be 1% better each day'



Why choose Queen Elizabeth's School?

Our Vision

- All students strive to be the best that they can be.
- All students learn to become “young professionals” and understand the need to be an asset to the community they serve and part of the QE Family.
- To develop the “whole person”. Ensure academic development, learn transferable skills and learn how to keep healthy and ensure mental wellbeing.
- To succeed in achieving their first choice destination.
- To be a positive role model and demonstrate outstanding behaviour in a christian environment.



'Be 1% better each day'



Why choose Queen Elizabeth's School?

Academic Success

- Students achieve their target grades - set aspirationally using ALPS, our students meet their target grade, enabling high numbers to access Oxbridge and Russell Group Universities
- High performance in a range of subjects: Health and Social Care, Music, Spanish, English Literature and Language, Sociology, PE, Performing Arts BTEC, History, Chemistry, Physics, Further Maths, Politics and Product Design.
- A* - C: 70%



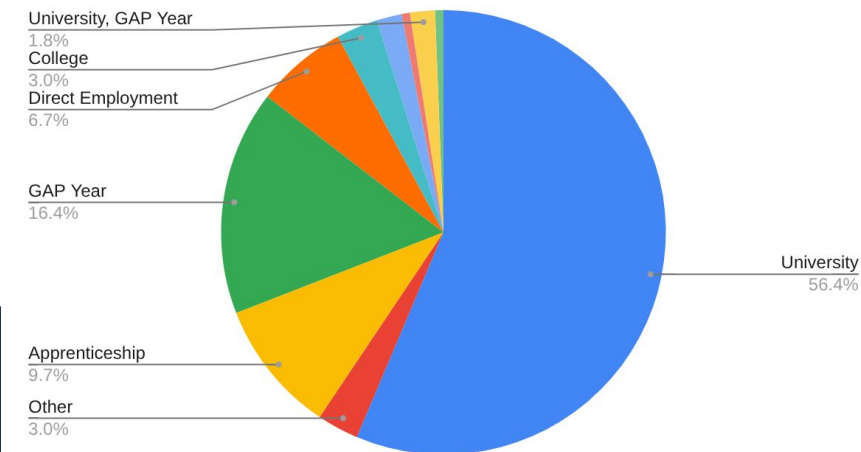
'Be 1% better each day'



Why choose Queen Elizabeth's School?

Destination Success

- The vast majority of our students go on to a professional destination straight away or secure a university place before their Gap Year
- Applications for Russell Group Universities including Oxbridge continue to grow with 100 offers last year Architecture at Cambridge & Sheffield, Medicine at Lancaster, Dentistry at Dundee, Maths at University College London, Actuarial Science at York, Chemistry at Birmingham, Human Geography with planning and Engineering at Cardiff, Economics and International Relations at Southampton, Multiple courses including Engineering, Data Science, Law, Sociology, Drama and Languages at Bristol and Exeter.
- Students earn top apprenticeships at KPMG, Skyborne Flight School, Azets Accounting, Bourne Group, NHS Dorset Dental Nursing, Eaton Aerospace, Hearnese and Sunseeker.



'Be 1% better each day'

Why choose Queen Elizabeth's School?

Pastoral Support

- A Head of Sixth Form to oversee students and Sixth Form performance
- A Deputy Head of Sixth Form to support student development and outcomes
- An Enrichment and Destinations lead
- Designated pastoral and administration support to monitor attendance and programmes of study
- Designated Careers support from a Careers adviser
- Specialist support for students with additional needs
- Individualised programmes of study to support student destinations
- Mental health and wellbeing support in school
- Supportive tutor programme



'Be 1% better each day'



Tutor Time Programme

	Monday	Tuesday	Wednesday	Thursday	Friday
AM 8.40-8.58	Tutor slides - prepare for the week	<u>Study Skills / Life Skills</u>	C4L	<u>RE</u> Assembly (split or joined)	Prepare for the weekend / <u>Weekly reflection</u>
	DACW	DACW	DACW	DACW	DACW
PM 13.35-13.58	<u>Destinations</u> Unifrog, UCAS, speakers and destinations plc	<u>Study Skills / Life Skills</u> <u>Reading / Own Book!</u>	C4L	RE	<u>Folder check</u> half term Mentor / Mop up activities from the week "Feel Good Friday Fun" (Active Tutor)

The tutor programme is a hugely valuable part of the provision for all 6th form students, and this shows the range of activities we have and timetabled support for this to be completed through the tutor programme.



'Be 1% better each day'



Why choose Queen Elizabeth's School?

Enrichment

- UCAS and CV support.
- Leadership opportunities - Team QE (many of whom you can speak to tonight).
- Societies, clubs, teams, trips and visits.
- Mentoring and interventions.
- High Performance, Junior Athlete Education (JAE) programmes
- Lots of enrichments courses to support transferable learning skills - such as Arts Award, Duke of Edinburgh Award, Online courses and where possible Work experience.



'Be 1% better each day'



Ewan and Lillia

Head Boy and Head Girl



'Be 1% better each day'



The Entry Process for our Sixth Form



'Be 1% better each day'



What are the entry requirements?

Minimum Sixth Form Entry Criteria

- 5 or more GCSE or equivalent grades at 4 to 9.

Minimum Subject Entry Criteria

- Each subject has an individual entry criteria, use the options booklet to ensure that you meet any additional requirements in order to study your preferred subjects.
- Some subjects may have a 'Route A' and 'Route B' entry option.

Minimum Subject Entry Options

- A minimum of 3 and maximum of 4 subjects can be selected plus 1 compulsory enrichment option.
- *Please Note:*
 - *A course may not be offered if there are too few students wishing to study that subject - there are alternatives*
 - *We cannot guarantee that all student subject combinations can be offered.*



'Be 1% better each day'



What are the entry requirements?

	Courses	Entry Requirements
A Level	All A Levels (3 or 4 A levels)	Grade 9-6 ideally including English/Maths with individual subject requirements
Mixed Pathway	Mix of A Levels and BTECS	Grade 9-5 ideally including English/Maths with individual subject requirements
Professional	BTECs/Core Maths/AS Maths	Grades 9-4 ideally inc Eng/Maths with individual subject requirements
Level 2	GCSE English and Maths retakes	Grade 3 in English/Maths
Enrichment to add to your Programme of Study	Various	(EPQ 9-6 in English)



'Be 1% better each day'



The Sixth Form Programme of Study for September 2026 entry



'Be 1% better each day'



3 options need to be selected from A to D. An enrichment needs to be selected from Block E

Block A	Block B	Block C	Block D	Block E
Biology	Design Technology (Product Design)	Art	Biology	Arts Award Gold - UCAS Points
Business	History	Chemistry	Dance*	Extended Project Qualification (EPQ) - UCAS Points
English Literature	Maths	Computer Science	French	Level 3 Core Maths – UCAS Points
Geography	Media	Economics	Further Maths	Level 3 LAMDA – UCAS Points
Physics	PE	English Language	Graphics	Sports Leaders UK Level 3 – UCAS Points
Politics	Photography	Geography	History	Google Workplace Skills
Textiles	Sociology	Maths	Philosophy and Ethics	Duke of Edinburgh Award (DofE)
	Spanish	Psychology	Psychology	GCSE Maths or English Retake
	Theatre Studies			Junior Athlete Education (JAE)
Business BTEC (Double)	Criminology Applied Diploma (single)	Criminology Applied Diploma (single)	Business BTEC (Single)	Sustainability - Level 3 UCAS Points
Health and Social Care	IT BTEC	Performing Arts BTEC (Double)	Business BTEC (Double)	Massive Open Online Course(MOOCs)
Performing Arts BTEC (Single)	Sport BTEC (Double)	Rock School Level 3 (Single)	Mental Health	Dance
Performing Arts BTEC (Double)	Rock School Level 3 (Double)	Rock School Level 3 (Double)		Sport
		Sport BTEC (Single)		Mentoring
		Sport BTEC (Double)		Work Experience / Volunteering/ Internships



How do you apply?

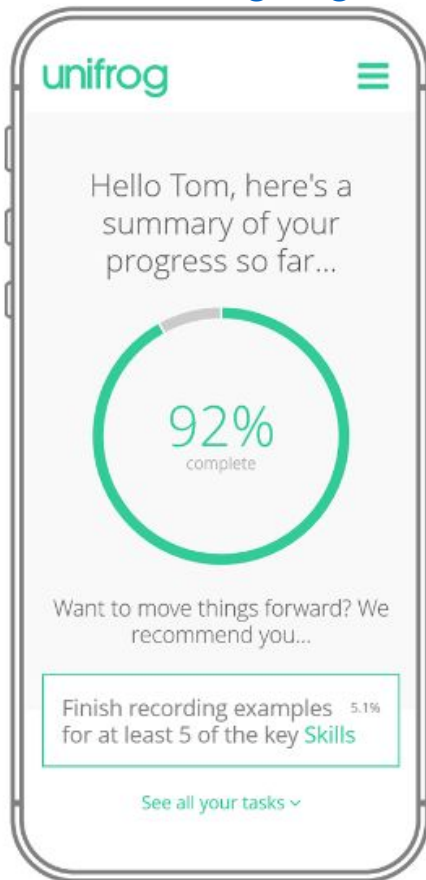
- The application process opens on the **14th November**
- Internal and external **application forms** will be available from the QE website Sixth Form page
- You will need to include the following on the application form explaining:
 - Why you want to come to QE Sixth Form?
 - Why you have chosen your courses and enrichment option?
 - What are your future plans and desired destinations?
 - What do you think you will bring to QE and the Sixth Form?
- Deadline - **31st January**
 - *Applications can be made throughout the year but we encourage students to meet this deadline.*
- **Interviews** with a member of SLT or the Sixth Form Team
 1. Conditional offer made, or
 2. A second interview followed by a possible conditional offer made, or
 3. Referral to the Careers Team



'Be 1% better each day'

How should you prepare for application?

<https://www.unifrog.org/>



- Start your **research and planning early**
- Ask as many **questions** as you can of your current teachers
- Use our professional **guidance and support**
- Begin your application letter and interview preparations – **be pro-active!**



'Be 1% better each day'



What do you need to look out for?

November 2025

Invitation / Year 11 Launch

13th November 2025 - Sixth Form Open Evening

Application process opens and interviews

31st January 2026- Application Deadline

May - June 2026 - GCSE Exams

23rd June 2026 - Compulsory Sixth Form Induction Day

20th August 2026- GCSE Results Day

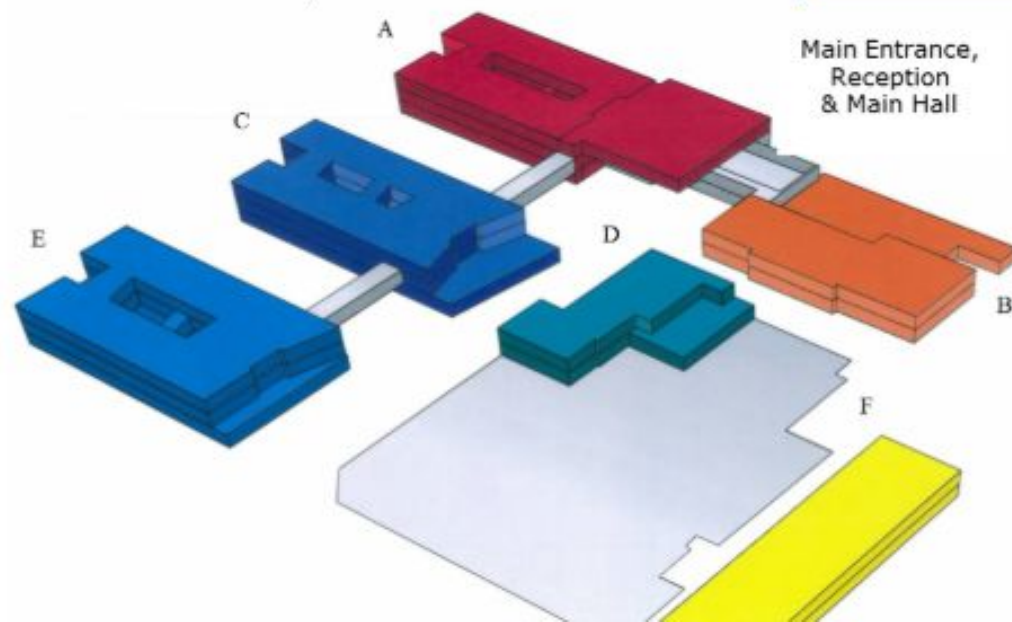


'Be 1% better each day'



Faculty	Subject	Venue	Faculty	Subject	Venue	
Science	Biology	E201	Enrichment in faculty	Enrichment Option Stands	Main Foyer/faculties	
	Chemistry	E201		Creative Arts	Fine Art	A307
	Physics	E201			Photography	A310
		Graphic Communication			A304	
		Textiles	A302/4			
English	English Language	C1 Breakout	Performing Arts	Performing Arts - Single and double	Farthing Hall & Dance Studio (until 6.15pm)	
	English Literature	C1 Breakout		Drama and Theatre Studies		
Mathematics	Mathematics	E3 Breakout		Dance	Dance Studio 5-6.15pm Farthing Hall 6.15 -7pm	
	Further Mathematics	E3 Breakout		Music performance in B212		
Modern Foreign Languages	French	C2		Rockschool	B214	
	Spanish	C2		Media Studies	Farthing Hall	
Humanities	Geography	C3 Breakout		PE	Athlete Ed	
	Criminology - Single	C206		Physical Education	Sport - Single	Athlete Ed
	Health and Social Care - Single	C206	Sport - Double		Athlete Ed	
	Mental Health Studies	C206				
	History	C303				
	Politics	Opposite C303				
	Philosophy and Ethics	C301				
	Psychology	C206				
	Sociology	C206				
	Design Technology	Product Design	A108			
Business and ICT	Business	A204/A205				
	Business - Single	A204/A205				
	Business - Double	A204/A205				
	Computer Science	A212				
	Economics	A204/A205				

Time to
find out
even
more...



Thank you



'Be 1% better each day'

